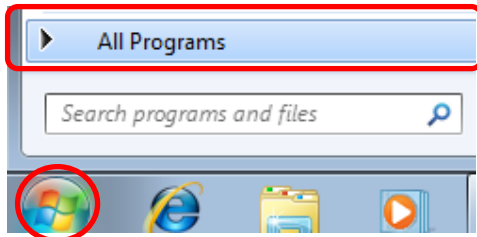
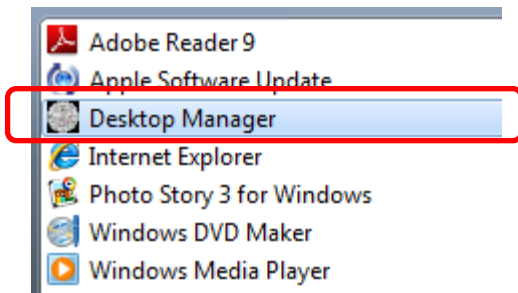


## Installing Elmo Image Mate

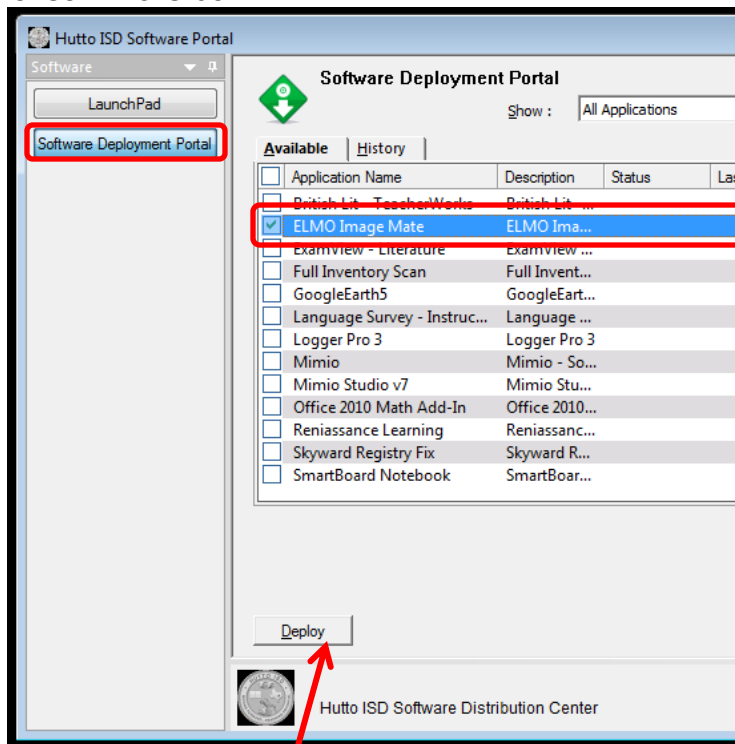
1. Go to start all programs



2. Select Desktop Manager, towards the top of the list.

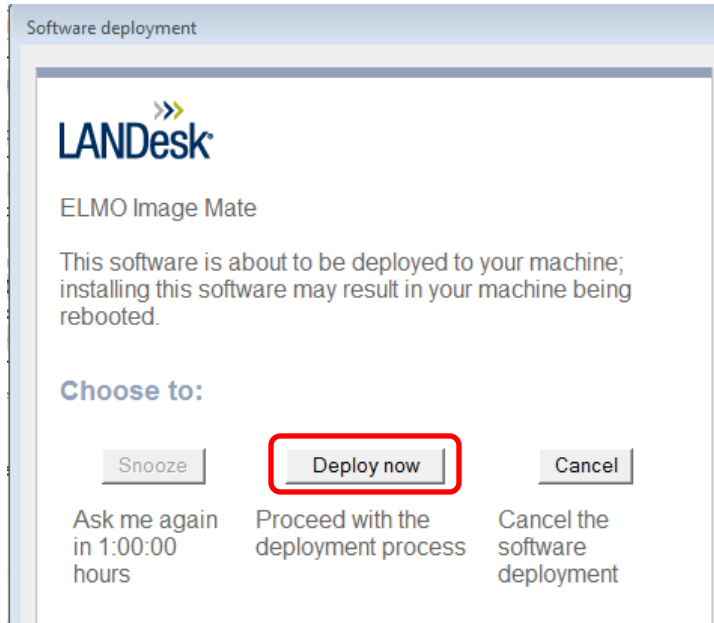


3. Click on Software Deployment button and then select **Elmo Image Mate** by putting a check in the box.

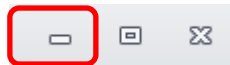


4. Click Deploy button.

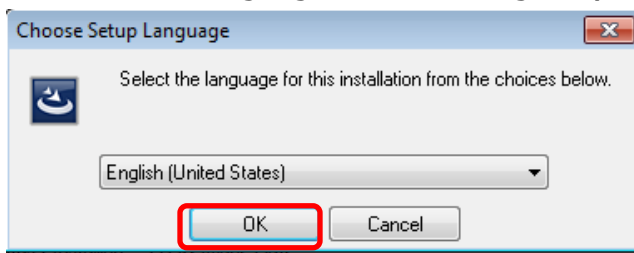
5. Click on Deploy now button.



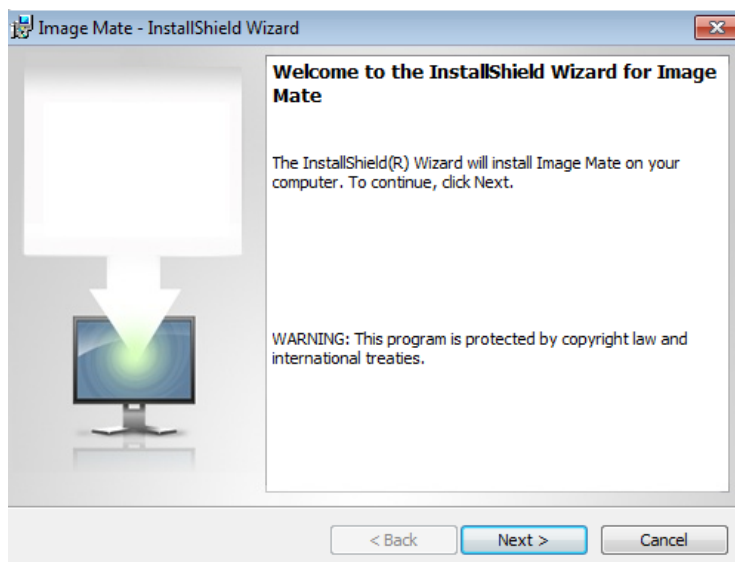
6. Minimize the deployment window.



7. Select OK for Language choice as English (United States)



8. Select Next.



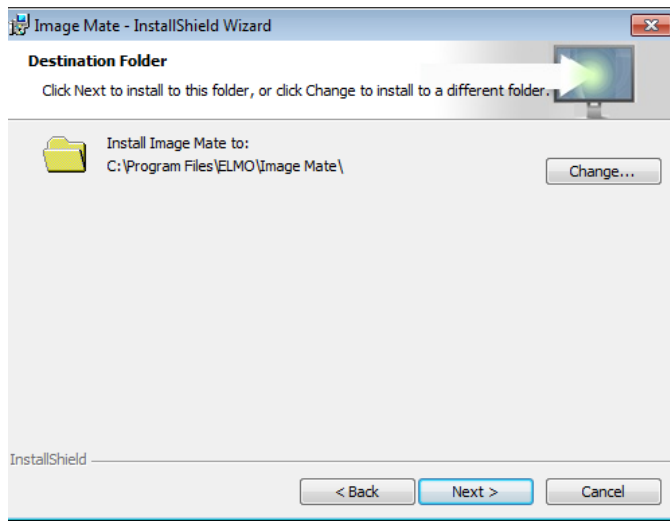
**Summary of Steps 7-18**

- OK
- NEXT
- I Accept Terms & Next
- Next
- Install
- Wait....
- Next
- Wait...
- Install Driver anyways (4 times)
- Finish
- Finish
- Close

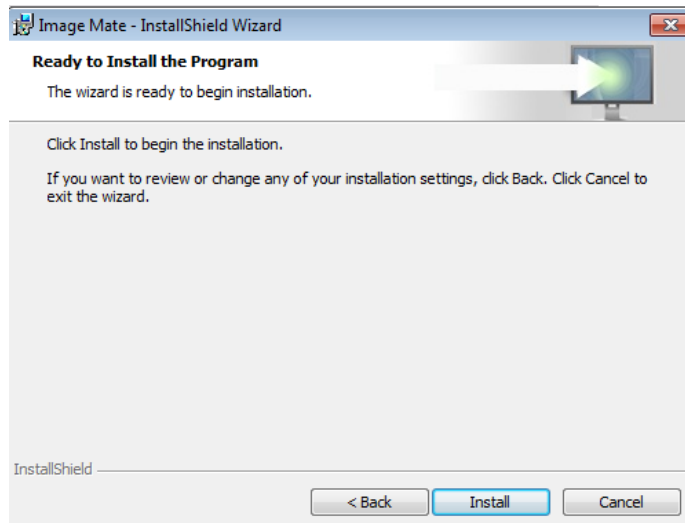
9. Select I accept the terms in the license agreement and then Next



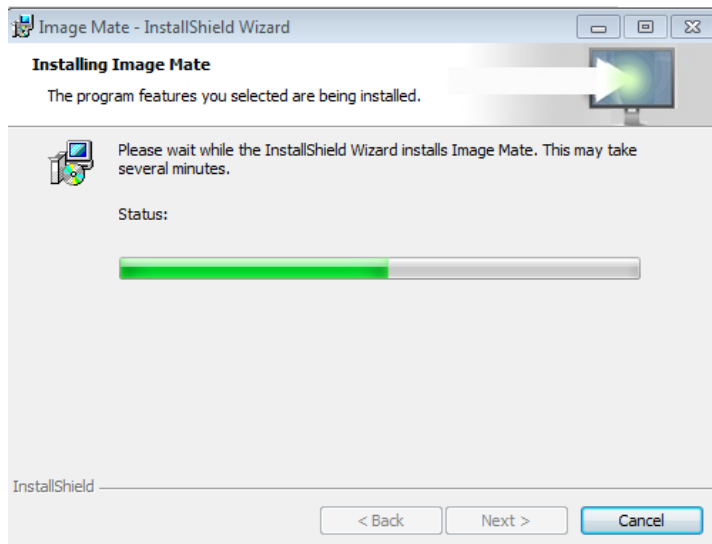
10. Click Next



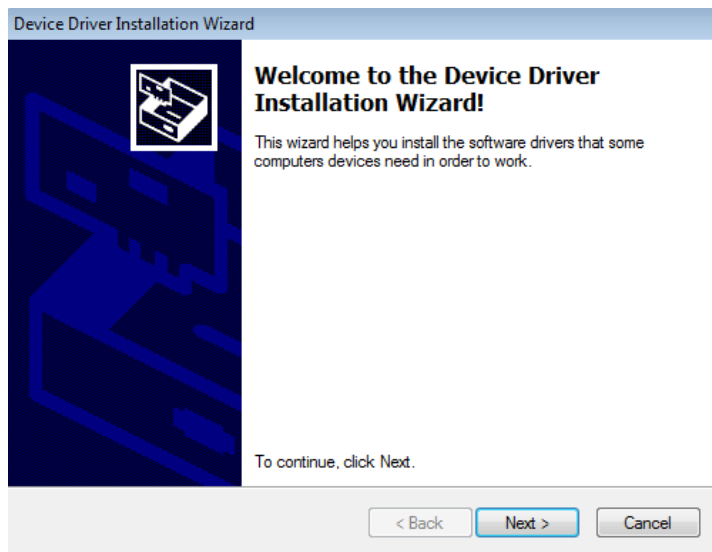
11. Click Install



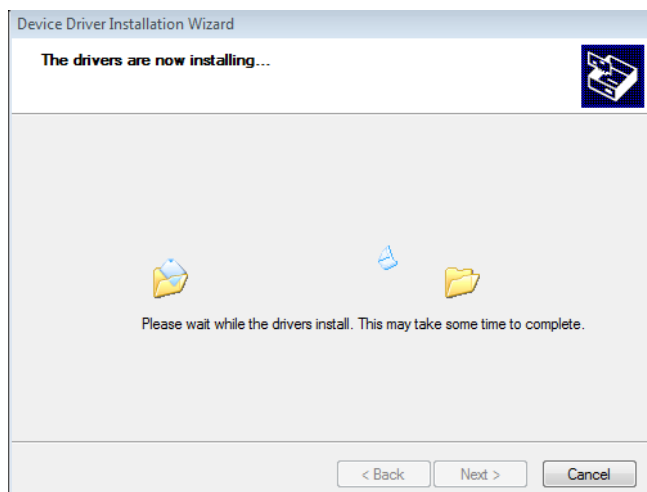
12. Next step can take several minutes. You can leave it running, work on other things, and came back to check on it.



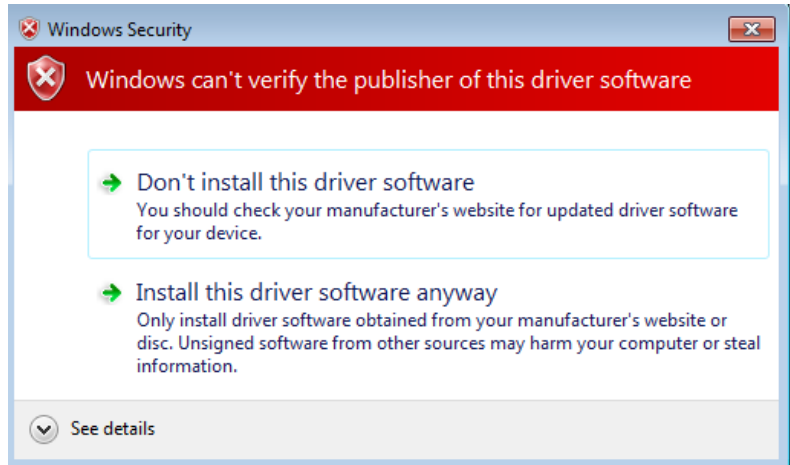
13. Click Next



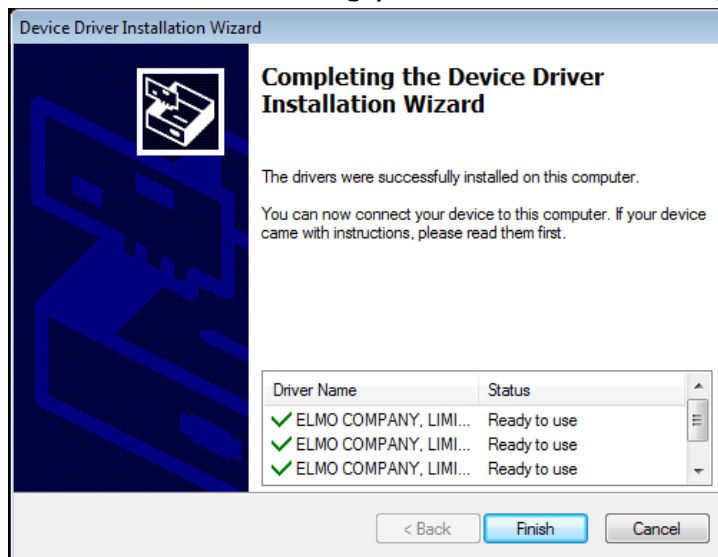
14. Drivers will take a few minutes to install. SEE STEP 15 ON NEXT PAGE



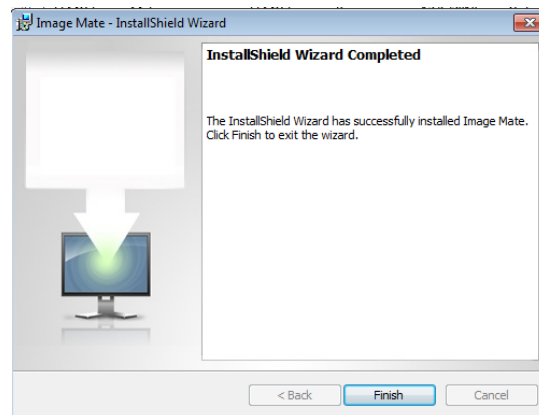
15. When you have this window pop up then click Install this driver software anyways.  
**It will happen 4 times.**



16. When it is done installing you will see this window, click Finish.



17. Click Finish.



18. Click Close.

