

4 BIGGER PICTURE

Identifying, writing, and analyzing components of effective sentences

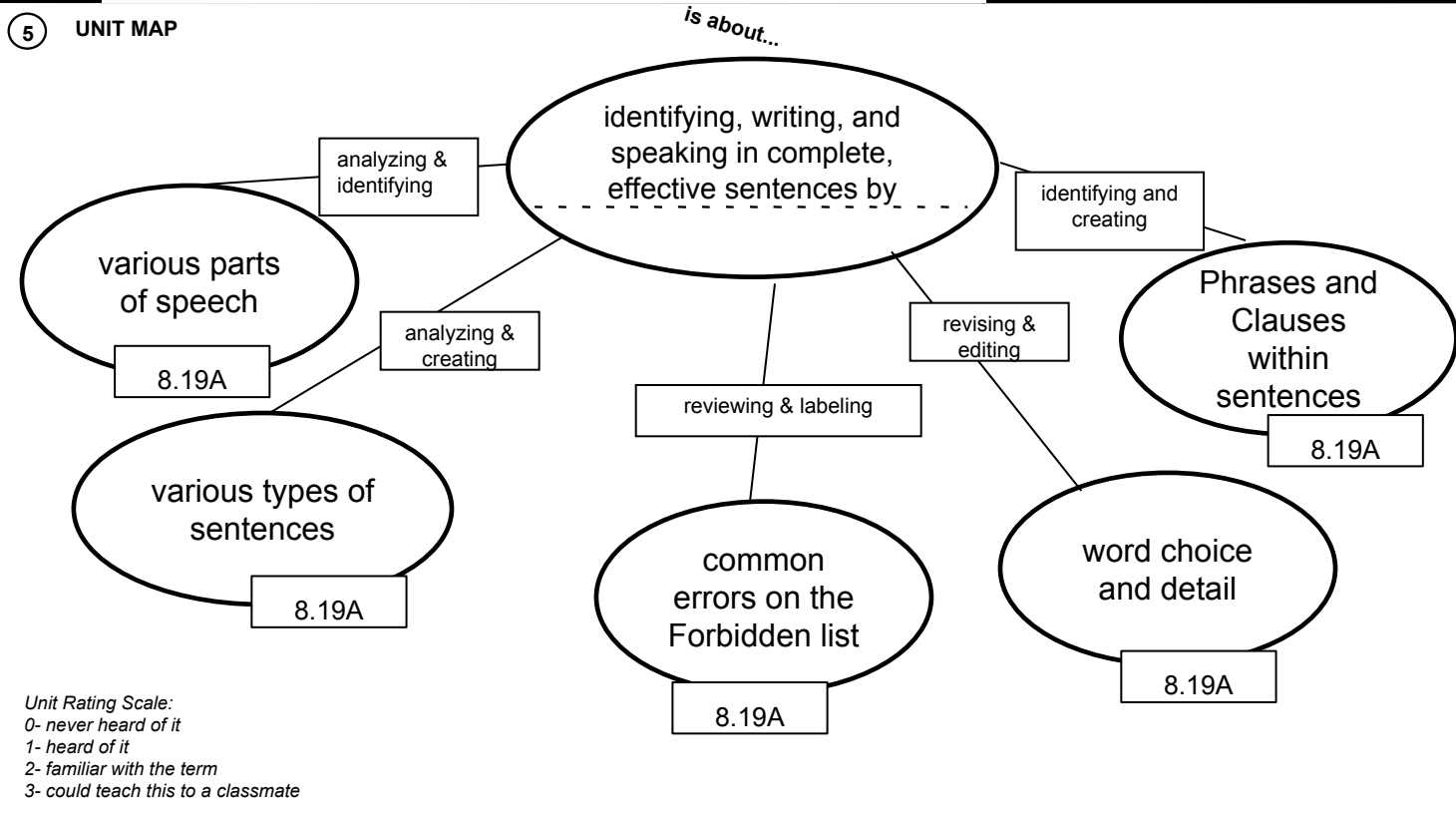
2 LAST UNIT /Experience  
7th grade

1 CURRENT UNT  
Grammar

3 NEXT UNIT /Experience  
Challenges of Heroism

8 UNIT SCHEDULE

8/22	Unit Launch
8/22	Subject/Verb Review
8/23	Forbidden List Intro
8/23	Flowers for Algernon
8/24	DO, IO, ADJ, ADV
	Six Word Memoirs
8/27	The Great Eight
	Mentor Sentence Intro
	Progressive Essay
	Peer Editing
9/5	Progressive Essay (test grade) due
9/14	Essay Corrections Due



7

UNIT SELF-TEST QUESTIONS	What parts of speech are essential to form a complete sentence?	0	1	2	3
	What parts of speech make a sentence more descriptive?	0	1	2	3
	Why are grammar rules necessary for effective writing?	0	1	2	3
	What are the differences in phrases and clauses?	0	1	2	3
	What are the various forms of sentences?	0	1	2	3

6

RELATIONSHIPS	Analyze
	Identify
	Revise
	Review
	Label
Edit	
Create	

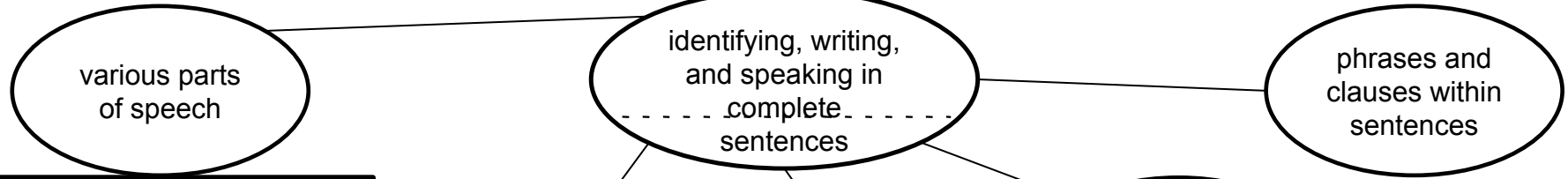
UNIT

# The Unit Organizer

## Grammar

NAME \_\_\_\_\_  
DATE \_\_\_\_\_

### 9 Expanded Unit Map



A **verb** is an action word  
A **noun** is a person, place, or thing

- subject
- direct object
- indirect object

**Adjectives** are descriptors for nouns

**Adverbs** are descriptors for verbs (usually end in "-ly")

The steps to identifying these parts of speech are:

- 1) Verb
- 2) Subject (who verbed?)
- 3) DO (Subject verbed what?)
- 4) IO (Subject verbed to whom?)

Proofs for these parts of speech are:

verb = (I \_\_, you \_\_, he \_\_s)  
noun = (a \_\_, the \_\_, some \_\_s)  
adjective = (a \_\_ book, a \_\_ person, a \_\_ idea)  
adverb =

various types of sentences

**Simple:** SV, SVV, SSV, SSVV

*We walked. He sang.*

{psst! \_\_ !!!! test}

**Compound:** I , fanboys I .

I ; I .

*We walked, and he sang.*

*They walked; it took so long.*

**Complex:** D , I .

I D .

*Because he walked, I sang.*

*He walked because I sang.*

**Compound-Complex:** D , I D .

common errors on the Forbidden List

- Capitalization
- End marks
- Apostrophes
- Commas
- Quotation Marks
- Italics
- Semicolons
- Pronoun errors
- Basic Sentence Faults
- "Do Not's"

word choice and detail

-Diction

-Imagery

-Sensory Language

phrases and clauses within sentences

**-Phrase:** cannot stand alone

**-Clause:**  
dependent=cannot stand alone  
independent=stands alone

-Prep Phrases

-Appositive Phrases

-Adjective Clauses

-Adverb Clauses

-Infinitive Phrases

-Participial/Past Phrases